

What's New?

Version 13

RIP SOFTWARE - VERSION 13 - CALDERA 2019



Table of Contents

Table of Contents	2
Forewords	3
New paths	3
New Features & Enhancements	3
New Features	3
Print&Cut Mirror	3
Tile Order	4
CalderaJobs advanced	4
2xCMYK Print mode	5
Custom annotations	5
Alpha-to-Spot	6
Adobe Textile Designer	6
Included features	7
CalderaJobs - Archive and restore	7
CxF/4 Spot Color Libraries	7
InkPerformer V3	8
Enhancements	9
Light installers	9
CalderaDock UX improvements	9
Pantone Libs update	9
PrintBleed increased limit	9
CxF/4 CMYK	9
New drivers	10
Printers	10
Spectrophotometers	10
Updated drivers	10
Printers	10

License Agreement

Copyright 2019 Caldera. All rights reserved.

All trademarks, logos and brand names mentioned in this publication are property of their respective owners.

All images and photographs here featured are the copyright of their respective owners.

Caldera reserves the right to modify software specifications and content cited in this document without prior notice.



Watch our Version 13 – technical overview on YouTube.

Caldera Version 13 is a major version that requires a new license.

To get your Version 13 license, either temporary or permanent, please contact your dealer or our Sales Team.

The update from Version 12 to Version 13 is free for customers who have subscribed to **CalderaCare**.

Forewords

New paths

Destination paths have changed in **Caldera RIP Version 13**.

When performing an update to v13 from a previous version, the V13 installer (for Linux and mac OS) launch scripts and tools to perform a migration of your data. It will be done automatically before launching the Caldera installation.

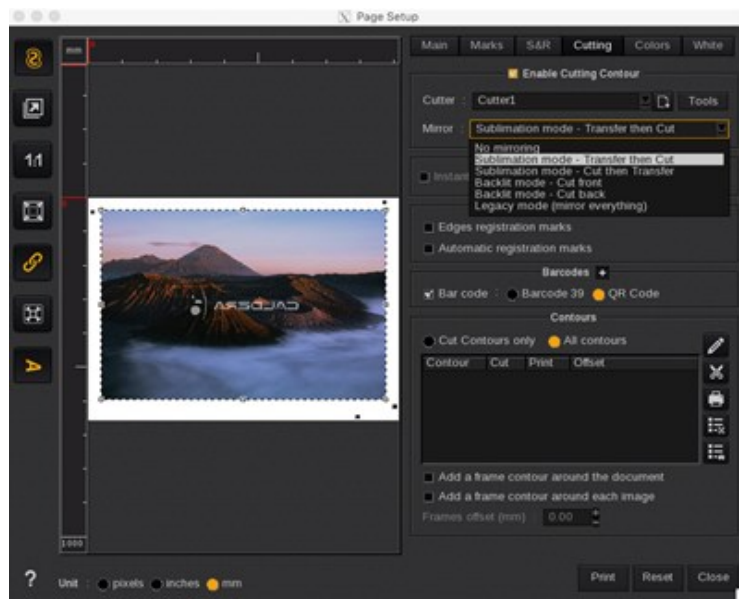
Linux former path	macOS former path	Linux and macOS new path
/home/jobs	/CALDERADATA/jobs	/opt/caldera/var/jobs
/home/public	/CALDERADATA/public	/opt/caldera/var/public
/home/tmp	/CALDERADATA/TMP	/opt/caldera/var/tmp
/home/Bridge	/CALDERADATA/Bridge	/opt/caldera/var/nexio
/usr/lib/inst	-	/var/db/calinst
/home (no change)	/CALDERADATA/Users	No change for Linux /Users for macOS

New Features & Enhancements

New Features

Print&Cut Mirror

The new **Print&Cut Mirror** feature has been specifically designed to offer more flexibility when it comes to advanced Print&Cut applications such as transfer sublimation and backlit printing. This feature allows to flip independently design, Cut Marks and Cut files sent to the cutter device, depending on final results expectations.



Print&Cut Mirror is divided into 3 main categories (see the *Print&Cut Mirror HowTo* for more information) :

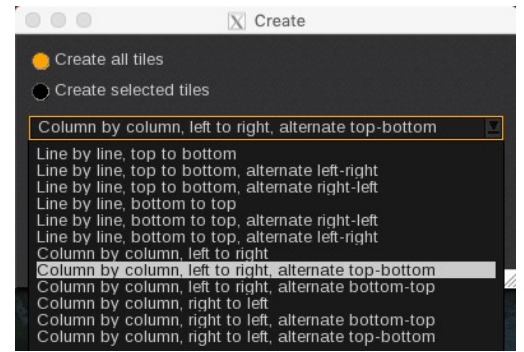
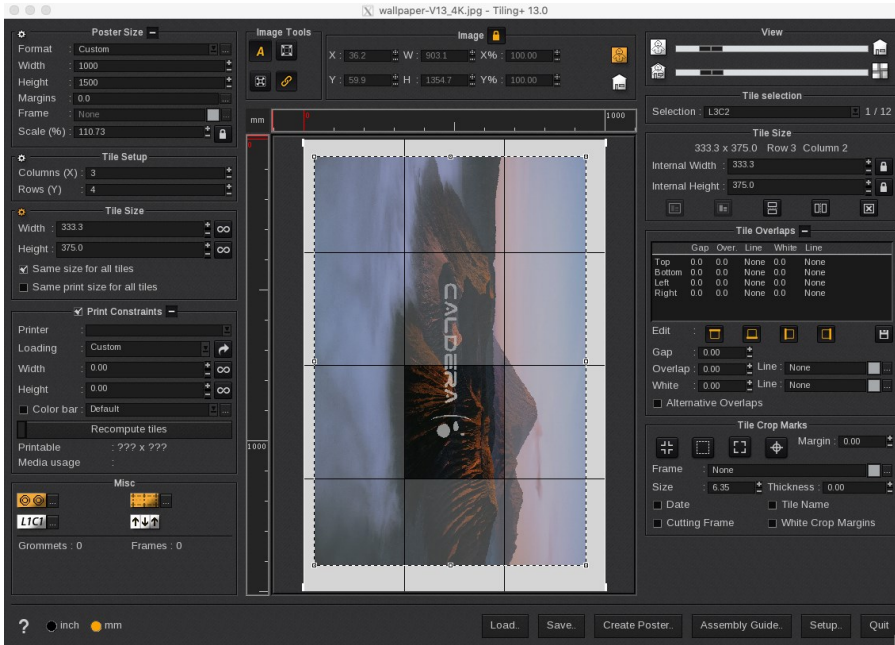
- Sublimation mode: Transfer then Cut/Cut then transfer
- Backlit mode: Cut Front/Cut Back
- Legacy mode

Print&Cut Mirror is available for VisualRIP+ & GrandRIP+ Cut Marks.

NEW FEATURES & ENHANCEMENTS

Tile Order

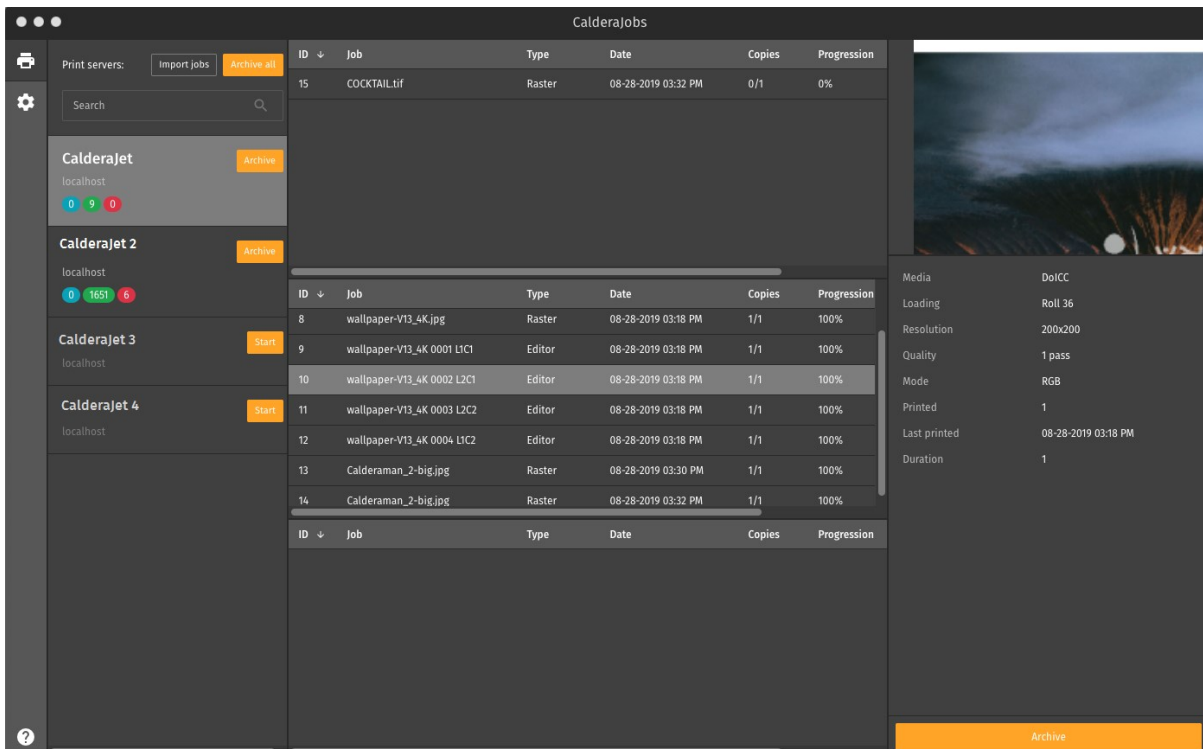
When creating a poster, several options are now available so you can **Choose where to start and alternate direction**. Also a new option allows you to **add this order into the filename**.



CalderaJobs advanced

CalderaJobs has been enhanced and now includes new features :

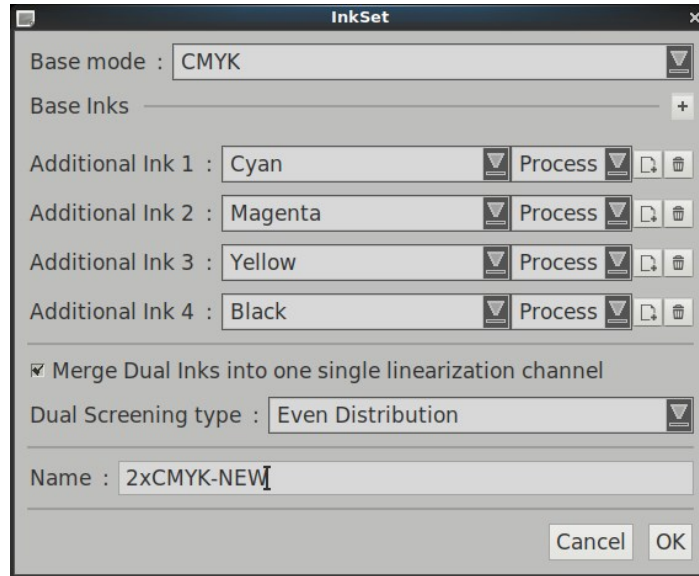
- Find your job details in your **Caldera RIP** Jobs queue
- Archive, save or delete selected jobs
- Sort jobs
- Detailed view



2xCMYK Print mode

Caldera RIP Version 13 provide an enhanced **2xCMYK printing mode** for finer prints with duplicated heads.

- The 2xCMYK features guarantees the **same exact consumption of inks for 2 heads** firing the same ink.
- 2xCMYK Print mode uses a new screening « EvenDistribution » having a much higher smoothness than before.
- 2xCMYK Print mode is seen as a simple CMYK from the user point of view, i.e. only 4 inks to linearize instead of 8 previously.



This option is available for all drivers having the **InkSet** editor.

It is however **not** available with Light Inks.

Custom annotations

In the *Page Setup* window, you can now choose the quantity of information to put in the **Annotations** part:

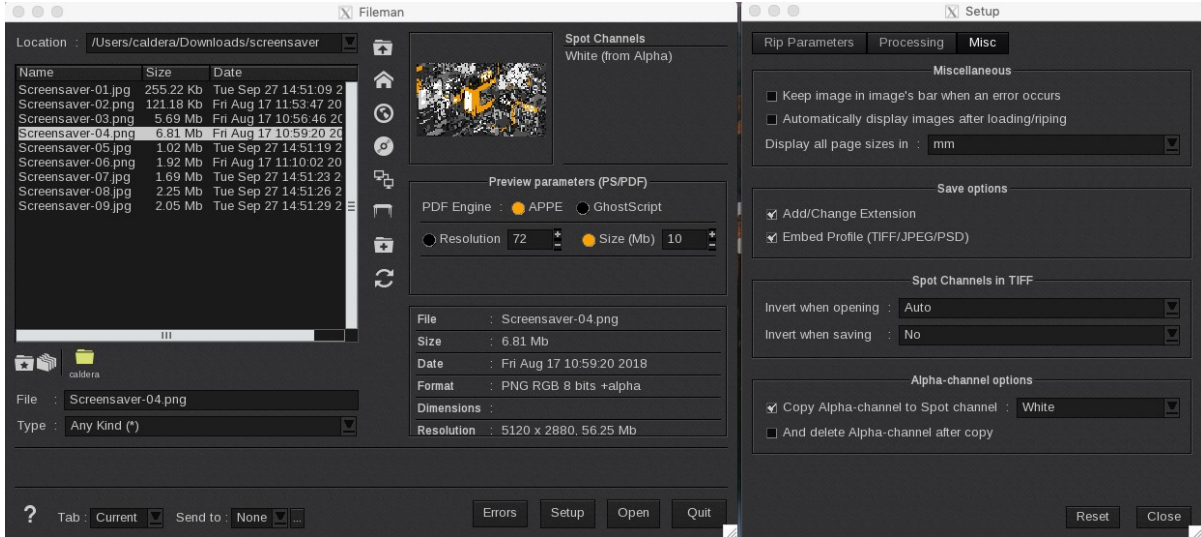
- **Standard Settings,**
- **With More details** or
- **Only custom text.**



NEW FEATURES & ENHANCEMENTS

Alpha-to-Spot

Caldera RIP version 13 now offers the ability to convert alpha channels to spot channels. The new features has been specially designed for Web workflows working with .png input files with transparent backgrounds.



Alpha-to-Spot option is available in **Fileman Setup** options.

Adobe Textile Designer

Caldera RIP Version 13 support Adobe Textile Designer file format to streamline your textile workflow.

Now you can easily import patterns generated in ATD with all the correct settings automatically set up in your **Caldera RIP** in order to save time configuring the print jobs and to avoid manual errors to print correctly the design. This feature was specially designed for Fashion & Home Decor. Thus, you will not need to set the drop and the spot colors in your **Caldera RIP** ; it will be done automatically!

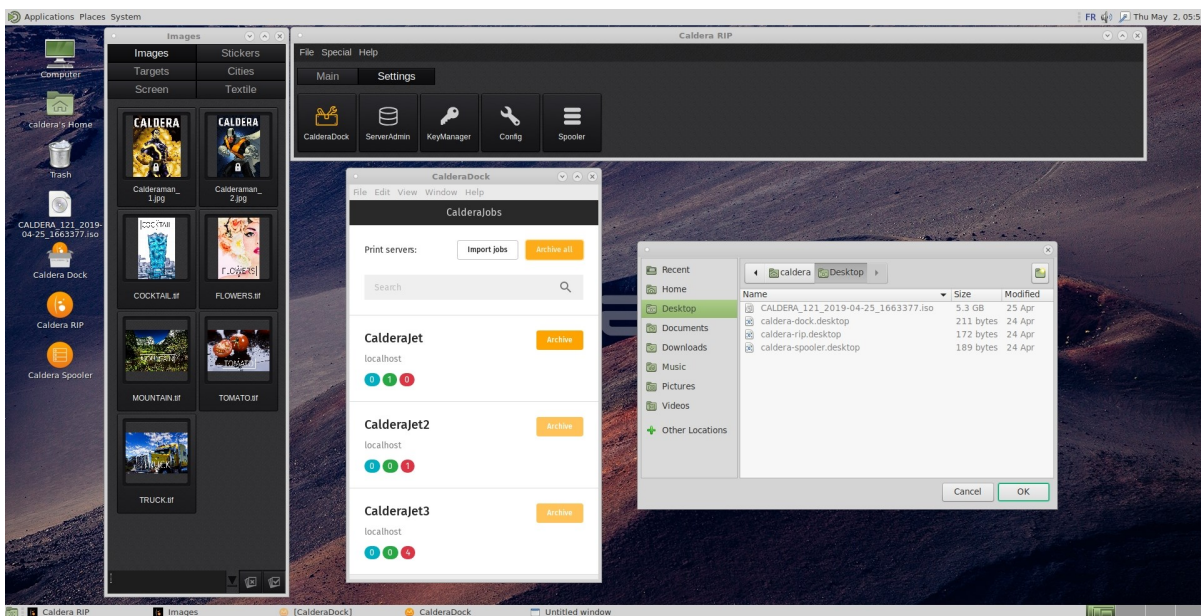


Included features

V12.1 CalderaCare Features now included in V13. CalderaCare is the support and maintenance solution for your Caldera RIP software, that will keep your production up and running when you need it most. A subscription to CalderaCare also ensures all your software products will be kept up-to-date with the latest versions and enhancements.

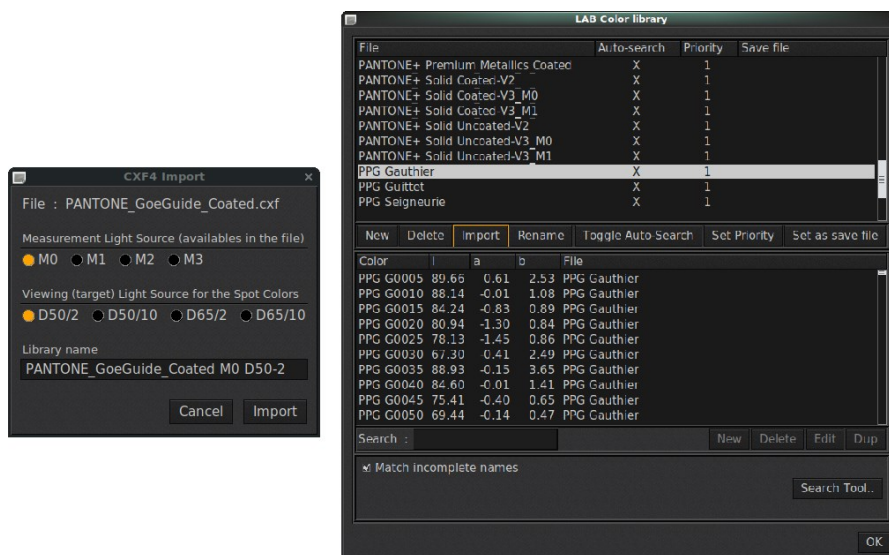
CalderaJobs - Archive and restore

CalderaJobs is a part of CalderaDock. CalderaJobs is a new feature to help printshops reprint exactly the same jobs after months while keeping the spooler and hard drive clean and performant by archiving and restoring jobs.



CxF/4 Spot Color Libraries

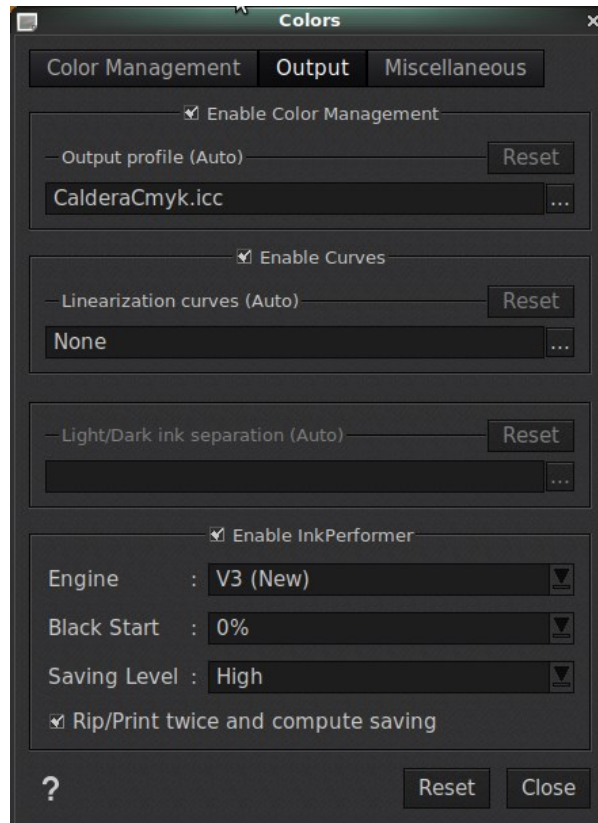
You can import spectral libraries for more accuracy in matching brand colors. Also, multiple illuminants and observers can be selected. Therefore, you can select the illumination source used for the spectral measurements (when several are available in the file), eg "M0," M1, "M2" or "M3" and also make a selection of the visualization source (target source), typically in Graphic Arts one will select in general D50/2 whereas in textile rather D65/10.



NEW FEATURES & ENHANCEMENTS

InkPerformer V3

Save more money with the highest color accuracy. InkPerformer new engine is based on minimizing total area coverage & ink usage (Alwan MTIU). As a result, compared to InkPerformer V2, when "Maximum" or 'High" saving level is selected, you can save up to 6% more absolute gain i.e. 25 % relative gain and get more vibrant colors. This option is not relevant for textile multi-layers files that have a spot color associated to each layer. Also, it is not relevant when using the RGB Workflow or Adobe CMM.



Enhancements

Light installers

Several Caldera Installers are now available. Compared to V12 (5.1 Gb), Caldera has reduced the size of the installer and you now have the option to download it without drivers and profiles. Here are the details about the new V13 installers:

- V13 Light mac dmg installer without Drivers and Profiles : 2.1 Gb
- V13 Light ISO without Drivers and Profiles : 3.1 Gb
- V13 Full installer offline : 4.1 Gb

If you install a light version, even if you had a former version of **Caldera RIP**, you will have to download & install the V13 driver that will be used.

CalderaDock UX improvements

CalderaDock now includes more features for a better user experience. Step by step CalderaDock become the cornerstone of your **Caldera RIP**.

Download your Caldera RIP directly from CalderaDock

- ISO, DMG are now available from CalderaDock.
- Get the last update/upgrade from your CalderaDock.

Download your ICC Profiles directly from CalderaDock

- Be aware at any time of the new profiles available for your printer.
- Download them from CalderaDock.

Download your printer driver directly from CalderaDock

- Do not lose time to find the right drivers anymore. Let CalderaDock filter them for you in regards to your license's content.
- Download them from CalderaDock.

Directly run the RIP via CalderaDock

- Same place to manage all your Caldera apps.
- Easier after IT management (Restart Services, License update, ...)

Pantone Libs update

Pantone libs has been updated with 210 new swatches in Pantone FHI Cotton TCX.

PrintBleed increased limit

PrintBleed limitation have been raised to 0.5 inches.

CxF/4 CMYK

Now you can import CMYK spot libraries.

New drivers

Printers

- **Epson**
 - SureColor x0600L

Spectrophotometers

- **X-Rite**
 - i1 Pro3 Plus

Updated drivers

Printers

- **Epson:** All the drivers using EED have to be updated, to use the latest libraries from Epson:
 - Epson-SC-S40600
 - Epson-SC-S60600
 - Epson-SC-S80600
 - Epson-SureColor-B9000
 - Epson-SureColor-F9300
- **MS:** Renaming resolutions from the short version to the long version. Example: "A4" becomes "A4 4passes 4levels MaxSpeed" The profiles created with the old drivers can be used with the new names. A profile created in a given group can now be used for all modes of the group (for example, a profile created in "A" mode can be used in "A4" mode).
 - MS-JP6
 - MS-JPK-UV
 - MS-JPK-UV-Dual
 - MS-JP3
 - MS-JP3-Dual
 - MS-JP4
 - MS-JP4-Dual
 - MS-JP5evo
 - MS-JP5evo-Dual
 - MS-JP4evo
 - MS-JP6-Dual
 - MS-JP4evo-Dual
 - MS-JP7
 - MS-JP7-Dual
 - MS-JPK
 - MS-JPK-Dual
 - MS-JPKevo
 - MS-JPKevo-Dual

Share your Caldera experience and discover our online help on:
calderadesk.caldera.com

CALDERA - 1 rue des Frères Lumière - P.A. d'Eckbolsheim
BP 78002 - 67038 Strasbourg Cedex 2 - France

www.caldera.com - Tel. +33 388 210 000 - Fax +33 388 756 242 - contact@caldera.com